

Project No	County	Map No	Route	Description	Lanes	Length MI	Width FT	Asphalt Surface Treatment, Split Seal SY	Emulsion GAL
			SR 1119- J.M. PENNINGER ROAD	From SR 1272 (Jersey Church Road) To End of Maintenance	2	0.701	20	8,225	4,524
			SR 1141- SIMERSON ROAD	From NC 150 To SR 1143 (Hanners Ferry Road)	2	2.007	20	23,549	12,952
			SR 1145- JUBILEE ROAD	From NC 150 To SR 1141 (Simerson Road)	2	1.502	18	15,861	8,724
			SR 1165- JUBILEE ROAD	From NC 150 To SR 1166 (Broadway Road)	2	1.88	18	19,853	10,919
			SR 1172- HORSESHOE NECK ROAD	From NC 150 To SR 1162 (Broadway Road)	2	2.503	18	26,432	14,537
			SR 1174- PETE BARNES ROAD	From SR 1172 (Horseshoe Neck Road) To NC 150	2	0.345	18	3,643	2,004
			SR 1191- CREWS LAKE ROAD	From NC 150 To Dead End	2	0.42	20	4,928	2,710
			SR 1205- HELMSTETLER ROAD	From SR 1221 (Tussey Road) To SR 1192 (Old US 64)	2	2.289	18	24,172	13,295
			SR 1210- BEAVER DAM CREEK RD.	From SR 1208 (Mount Carmel Road) To SR 1205 (Helmstetler Road)	2	0.902	20	10,583	5,821
			SR 1336- MOCK STREET	From SR 1192 (Old US 64) To NC 150	2	0.165	20	1,936	1,065
			SR 1348- RIVER POINT	From SR 1315 (Riverview Rd Ext.) To DE	2	0.25	20	2,933	1,613
			SR 1364- BURBANK DRIVE	From SR 1217 (Coble Farm Road) To SR 1342 (Woodland Avenue)	2	0.371	20	4,353	2,394
			SR 1365- LOWELL STREET	From SR 1217 (Coble Farm Road) To SR 1364 (Burbank Drive)	2	0.248	18	2,619	1,440
			SR 1422- MICHAEL DEV.	From SR 1417 (Leonard Road) To SR 1421 (Hill Street)	2	0.337	18	3,559	1,957
			SR 1430- VERGIL WYATT ROAD	From NC 150 To US 64	2	0.368	18	3,886	2,137
			SR 1433- DYKERS CREEK ROAD	From US 64 To US 64	2	1.345	18	14,203	7,812
			SR 1461- RAYMOND LANIER ROAD	From SR 1460 (Will Lanier Road) To SR 1460 (Will Lanier Road)	2	0.534	18	5,639	3,101
			SR 1470- SECOND STREET	From SR 3010 (Old US 52) To SR 3010 (Old US 52)	2	0.388	16	3,642	2,003
			SR 1208- MT. CARMEL ROAD	SR 1205 (Helmstetler Rd) to NC 150	2	1.19	18	12,566	6,912
			SR 1220- Mt Carmel Ch. Rd.	SR 1213 (Tyro Rd) to SR 1205 (Helmstetler Rd)	2	1.64	20	19,243	10,583
			SR 1541- HAMPTON STREET	From SR 1412 (Mize Road) To SR 1414 (Tesh Street)	2	0.176	18	1,859	1,022
			SR 1553- HICKS ROAD	From SR 1511 (Hartman Road) To End of Maintenance	2	0.598	20	7,017	3,859
			SR 1556- STEPHEN BOULEVARD	From SR 1555 (Palace Drive) To Dead End	2	0.385	20	4,517	2,485
			SR 1561- FRANCES LANE	From SR 1511 (Hartman Road) To SR 1562 (Sinkland Drive)	2	0.177	20	2,077	1,142
			SR 1565- PADDINGTON DRIVE	From SR 1242 (West Center Street Ext.) To Dead End	2	0.24	20	2,816	1,549
			SR 1566- ARCADIA DRIVE	From SR 1493 (Frye Bridge Road) To Dead End	2	0.086	18	908	499
			SR 1584- BRUCE STREET	From NC 150 To Dead End	2	0.465	20	5,456	3,001
			SR 1601- MENDENHALL DRIVE	From 1508 (Hickory Tree Road) To SR 1606 (Widaustin Drive)	2	0.446	20	5,233	2,878
			SR 1604- HIGHLAND COURT	From SR 1601 (Mendenhall Drive) To Dead End	2	0.036	20	422	232
			SR 1616- CHOYCE STREET	From SR 1412 (Mize Road) To Lexington City Limit	2	0.057	18	602	331
			SR 1623- SAURA LANE	From Dead End To Dead End	2	0.257	20	3,015	1,659
			SR 1632- GRANT ROAD	From SR 1493 (Frye Bridge Road) To Dead End	2	0.372	20	4,365	2,401
			SR 1654- MEADOW LANE	From NC 150 To SR 1655 (Meadow Glen Dr)	2	0.582	20	6,829	3,756
			SR 1671- MAITLAND COURT	From SR 1520 (Central Road) To Dead End	2	0.059	20	692	381
			SR 1678- ZINZENDORF ROAD	From SR 1516 (Friedburg Church Road) To Dead End	2	0.222	20	2,605	1,433
			SR 1679- SPANGENBERG ROAD	From SR 1678 (Zinzendorf Road) To Dead End	2	0.33	20	3,872	2,130
			SR 1683- CLOVER TRAIL	From SR 1644 (Primrose Lane) To Dead End	2	0.061	20	716	394
			SR 1686- WELCH CIRCLE	From SR 1537 (Friedburg Church Road) To End of Pavement	2	0.162	20	1,901	1,045
			SR 1696- SCOTSDALE LANE	From NC 150 To Dead End	2	0.357	20	4,189	2,304
			SR 1775- PAUL KENNEDY ROAD	From SR 1772 (Hasty School Road) To Dead End	2	0.319	20	3,743	2,059
			SR 1794- JOHN BRINKLEY ROAD	From I-85 To Dead End	2	0.443	20	5,198	2,859
			SR 1817- MCGEE ROAD	From SR 1810 (Clodfelter Road) To End of Maintenance	2	0.745	20	8,741	4,808
			SR 1818- CL. WAGONER ROAD	From End of Pavement to SR 1813 (Ridge Road)	2	0.515	20	6,043	3,323
			SR 1820- LEXINGTON/THOMASVILLE RD.	From SR 1813 (Ridge Road) To Dead End	2	0.596	20	6,993	3,846
			SR 1829- JOHN HINKLE ROAD	From SR 1828 (Frank Hinkle Road) To Dead End	2	0.057	16	535	294
			SR 1834- GEORGE SURRATT ROAD	From SR 1821 (Bethesda Road) To Dead End	2	0.432	20	5,069	2,788
			SR 1835- SINK ROAD	From SR 1841 (City Lake Road) To SR 1821 (Bethesda Road)	2	2.884	18	30,455	16,750
			SR 1221- Tussey rd.	SR 1147 (Old Salisbury Rd to SR 1205 (Helmstetler Rd)	2	1.73	20	20,299	11,164
			SR 2282- WARF RD	From SR 2284 (Feazor Rd) To SR 2284 (Feazor Rd)	2	2.45	20	28,747	15,811
			SR 1845- JOHN WARD ROAD	From SR 1844 (Greensboro St) To US 70	2	0.357	18	3,770	2,073
			SR 1856- DIXIE CLUB ROAD	From SR 2932 (Old US 52) To Dead End	2	0.776	20	9,105	5,008
			SR 1862- ACADEMY DRIVE	From SR 1813 (Ridge Road) To Dead End	2	0.168	20	1,971	1,084
			SR 1863- BRIGHTWOOD DRIVE	From SR 1757 (Chestnut Street Ext.) To Dead End	2	0.51	20	5,984	3,291
			SR 1877- US 29/70 SERVICE ROAD	From SR 1770 (Alberston Road) To Dead End	2	0.295	20	3,461	1,904
			SR 1899- JEFFERSON STREET	From SR 1827 (Salem Road) To SR 1826 (Lake Drive)	2	0.319	20	3,743	2,059
			SR 1908- KINGS LANE	From SR 1700 (Friendship-Ledford Road) To SR 1907 (Redcoat Lane)	2	0.347	20	4,071	2,239
			SR 1924- OLIVIA DRIVE	From SR 1844 (Greensboro Street) To End of Maintenance	2	0.129	20	1,514	832
			SR 1933- FRANKLIN DRIVE	From SR 1931 (Black Drive) To Dead End	2	0.098	18	1,035	569
			SR 2001- EAST PARK AVENUE	From SR 2002 (Robert Everhart Road) To Dead End	2	0.52	20	6,101	3,356
			SR 2027- TOM HEDRICK ROAD	From SR 2028 (Stemp Everhart Road) To SR 2710 (Chapel Drive)	2	0.258	20	3,027	1,665
			SR 2028- STEMP EVERHART ROAD	From SR 2031 (Pilot School Road) To SR 2179 (Ridge Drive)	2	1.001	18	10,571	5,814
			SR 2030- KENNEDY ROAD	From SR 2031 (Pilot School Road) To Dead End	2	0.416	20	4,881	2,685
			SR 2035- KENNEDY STREET	From SR 2031 (Pilot School Road) To SR 2032 (Johnson Town Road)	2	0.2	16	1,877	1,033
			SR 2039- AUGUSTA COURT	From SR 2123 (National Highway) To SR 2173 (Bethlehem Avenue)	2	0.248	20	2,910	1,600
			SR 2049- BECK DRIVE	From SR 2046 (Beck Drive) To US 29	2	0.073	16	685	377
			SR 2063- LAMBETH ROAD	From NC 109 To SR 2055 (Liberty Drive)	2	0.305	20	3,579	1,968
			SR 2083- GRIMES PARK DRIVE	From SR 2081 (Kooztz Avenue) To SR 2060 (Holly Hill Road)	2	0.085	18	898	494
			SR 2796- SUNSET DR	From SR 2702 (Julia Ave) To DE	2	0.14	20	1,643	903
			SR 2109- OLD ELMER ROAD	From SR 2104 (Cunningham Brock Road) To SR 2118 (Sullivan Road)	2	0.805	20	9,445	5,195
			SR 2124- SHELL ROAD	From SR 2028 (Stemp Everhart Road) To SR 2031 (Pilot School Road)	2	0.831	18	8,775	4,826
			SR 2127- FOREST PARK DRIVE	From Dead End To Dead End	2	0.076	20	892	490
			SR 2168- CEDAR DRIVE	From SR 2184 (Old NC 109) To SR 2761 (Harvest Drive)	2	0.562	20	6,594	3,627
			SR 2179- RIDGE DRIVE	From SR 2028 (Stemp Everhart Road) To Dead End	2	0.147	18	1,552	854
			SR 2207- QUEENS ROAD	From SR 1243 (Center Street) To SR 2390 (Queens Road)	2	0.413	20	4,846	2,665
			SR 2209- ABBOTTS AVENUE	From SR 2210 (Dellwood Drive) To Dead End	2	0.177	20	2,077	1,142
			SR 2251- BRIGGSTOWN ROAD	From SR 2250 (Beck's Church Road) To SR 2428 (Joan Drive)	2	1.748	16	16,408	9,024
			SR 2281- HERITAGE ROAD	From NC 8 To Dead End	2	1.179	20	13,834	7,608
			SR 2319- STEWART ROAD	From SR 2416 (Old Hwy 109) To Dead End	2	0.291	20	3,414	1,878
			SR 2374- DELK ROAD	From SR 2375 (Hill Road) To Dead End	2	0.1	20	1,173	645
			SR 2390- QUEENS ROAD	From Dead End To Dead End	2	0.397	20	4,658	2,562
			SR 2407- CARDINAL DRIVE	From SR 2391 (Wildlife Circle) To Dead End	2	0.382	20	4,482	2,465
			SR 2408- ABBID STREET	From NC 8 To SR 2409 (Northside Drive)	2	0.719	18	7,593	4,176
			SR 2409- NORTHSIDE DRIVE	From SR 2408 (Abbid Street) To SR 2408 (Abbid Street)	2	0.092	18	972	534
			SR 2442- FOREST HILL DRIVE	From SR 1001 (Farmer Road) To SR 2443 (Karen Drive)	2	0.328	20	3,849	2,117
			SR 2480- PONDERS CREEK DRIVE	From SR 2446 (Burkhart Road) To Dead End	2	0.246	20	2,886	1,588
			SR 2569- COUNCIL ACCESS ROAD	From SR 1002 (Denton Road) To Dead End	2	0.186	20	2,182	1,200
			SR 2702- JULIA AVENUE	From SR 2048 (Pinewood Road) To Dead End	2	0.34	20	3,989	2,194
			SR 2724- TIMBERLAND DRIVE	From SR 2091 (Fuller Mill Road) To SR 2723 (Autumn Drive)	2	0.266	20	3,121	1,717
			SR 2736- HARDISTER AVENUE	From SR 2183 (Fisher Ferry Road) To SR 2737 (Daisy Street)	2	0.089	18	940	517
			SR 2737- DAISY STREET	From SR 2736 (Hardister Avenue) To End of Pavement	2	0.091	18	961	529
			SR 2739- ROCK QUARRY DRIVE	From SR 2104 (Cunningham Brick Road) To SR 2787 (Tonya Drive)	2	0.224	20	2,628	1,446
			SR 2770- TOWER ROAD	From SR 2062 (Tower Road) To Dead End	2	0.26	20	3,051	1,678
			SR 2774- ASHEBORO STREET	From US 64 To Dead End	2	0.239	20	2,804	1,542
			SR 2786- CREEK DRIVE	From SR 2785 (Glendale Avenue) To Dead End	2	0.147	20	1,725	949
			SR 2791- CUNNINGHAM LOOP ROAD	From SR 2104 (Cunningham Brick Road) To SR 2104 (Cunningham Brick Road)	2	0.346	20	4,060	2,233
			SR 2799- POWERS ROAD	From SR 2157 (Underwood Drive) To Dead End	2	0.21	20	2,464	1,355
			SR 2787- TONYA DR	From SR 2739 (Rock Quarry Dr) To 2112 (Decker Rd)	2	0.239	20	2,804	1,542
			SR 2738- CALINDA DR	From SR 2787 (Tonya Dr) To SR 2104 (Cunningham Rd)	2	0.31	20	3,637	2,001
			SR 2814- STACEY STREET	From SR 2813 (Stacey Lane) To SR 2093 (Ben Lee Road)	2	0.451	20	5,292	2,910
			SR 2838- GROVE COURT	From SR 2110 (Light Road) To Dead End	2	0.181	18	1,911	1,051
			SR 1315- RIVERVIEW RD EXT	From SR 1107 (Riverhouse Rd) To DE	2	2.04	20	23,936	13,165
			SR 2933- PINE VALLEY ROAD	From SR 2934 (Bowers Road) To Dead End	2	0.191	20	2,241	1,233
			SR 2934- BOWERS ROAD	From SR 1785 (Whitehart School Road) To Dead End	2	0.481	20	5,644	3,104
			SR 2945- LEXINGTON AVENUE	From SR 1464 (Homer Leonard Road) To Dead End	2	0.15	18	1,584	871
			SR 2953- WOODTREE LANE	From Dead End To Dead End	2	0.276	20	3,238	1,781
			SR 2954- GEORGIA LANE	From SR 1716 (Bethaney Church Road) To End of Maintenance	2	0.222	20	2,605	1,433
			SR 2785- GLENDALE AVE	From SR 2112 (Decker Rd) To SR 2774 (Asheboro St.)	2	0.29	20	3,403	1,871
			SR 2985- LIVENGOD DRIVE	From SR 1716 (Bethaney Church Road) To Dead End	2	0.349	20	4,095	2,252
			SR 2987- BARBARA DRIVE	From SR 2954 (Georgia Lane) To Dead End	2	0.083	20	974	536
			SR 3174- OAKDALE LANE	From NC 150 To SR 3179 (Hillsdale Drive)	2	0.32	18	3,379	1,859
			SR 3180- VALLEY VIEW DRIVE	From SR 3174 (Oakdale Lane) To Dead End	2	0.051	18	539	296
			SR 3214- LOIS LANE	From SR 3213 (Radds Street) To Dead End	2	0.126	20	1,478	813
			SR 3256- EARLS LANE	From SR 3227 (Maggies Court) To Dead End	2	0.062	20	727	400
			SR 3268- CHRISTINE COURT	From SR 3206 (Tara Gail Lane) To Dead End	2	0.32	20	3,755	2,065
			SR 3278- CLAY DRIVE	From SR 1527 (West Drive) To Dead End	2	0.147	20	1,725	949
			SR 3337- ROLLING GREEN DR.	From SR 1700 (Friendship-Ledford Road) To Dead End	2	0.447	18	4,720	2,596
			SR 2784- SUNSET AVE	From SR 2112 (Decker Rd) To SR 2774 (Asheboro St.)	2	0.29	20	3,403	1,871
			Project Total			58.786		660,029	363,016
			Grand Total			58.786		660,029	363,016

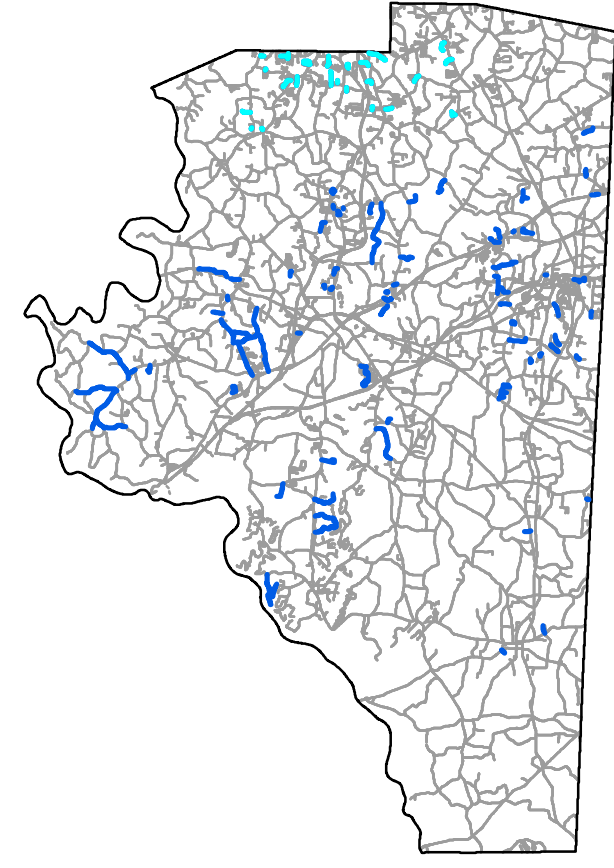
SR 2029.4

Davidson

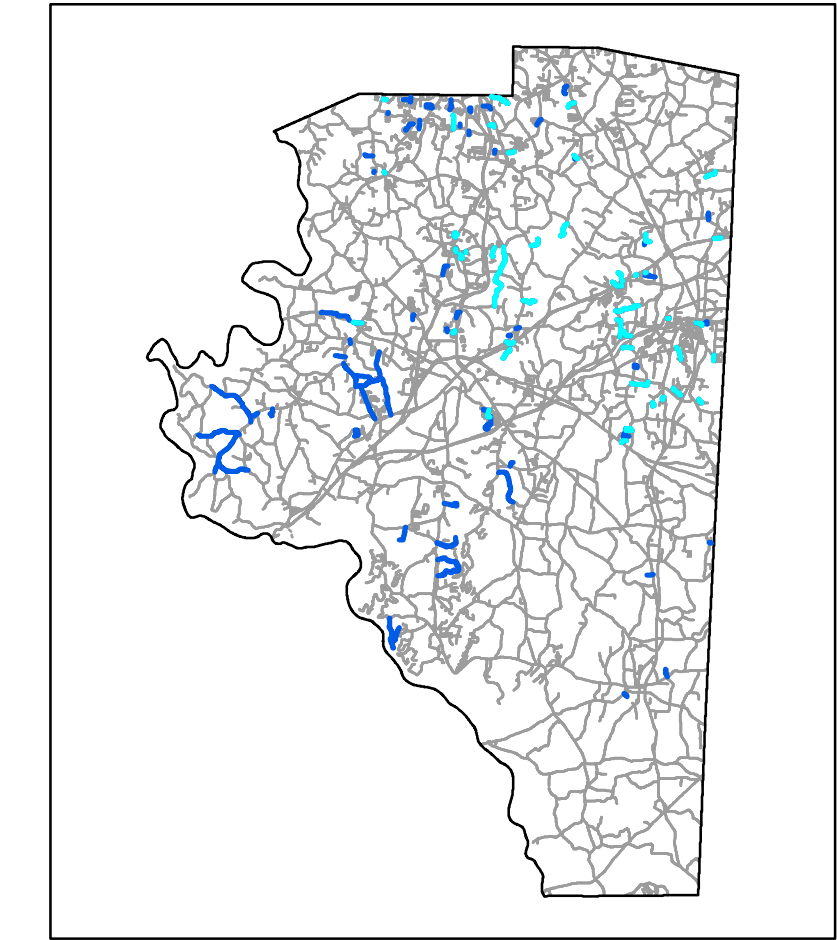
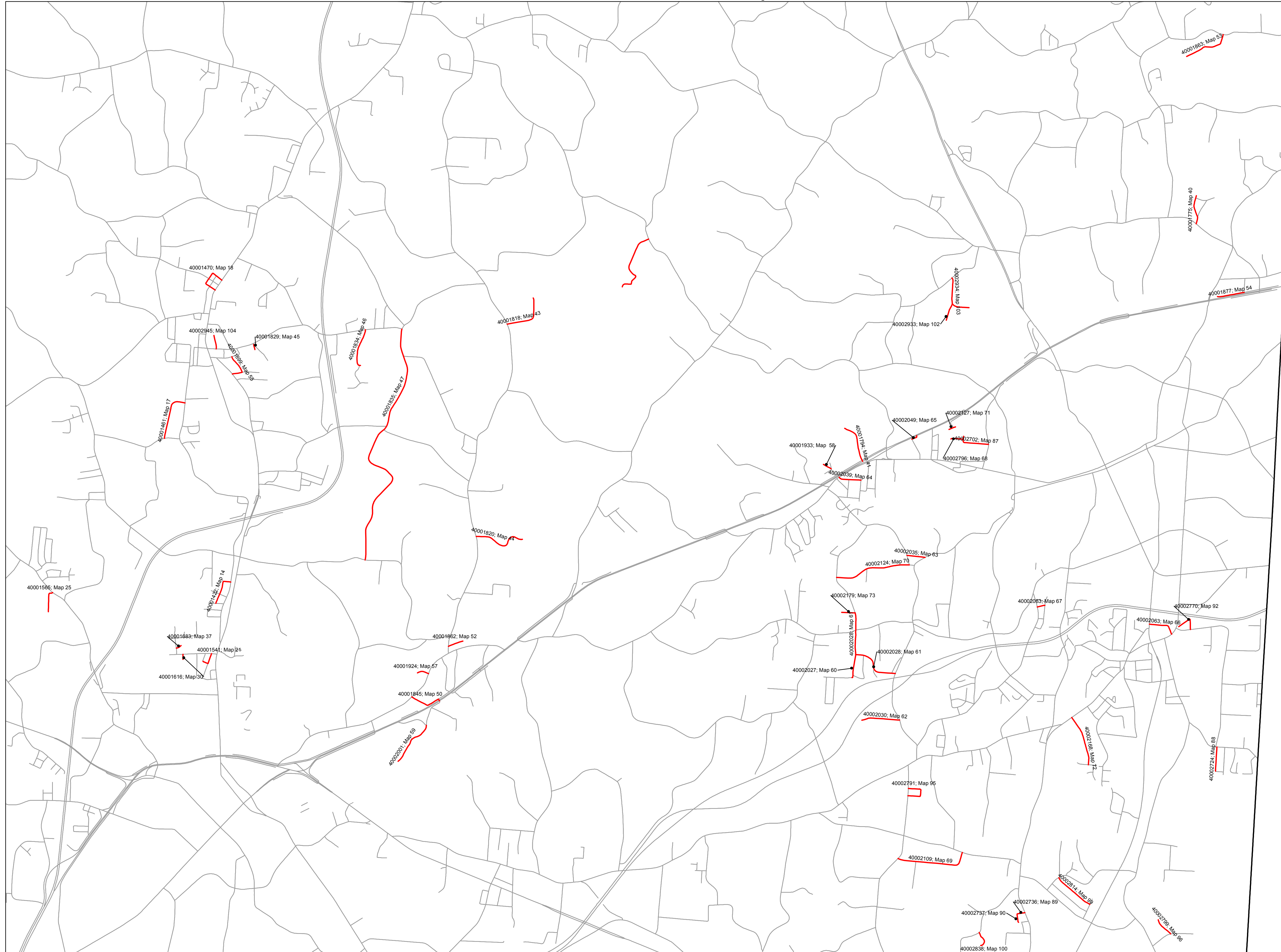
Davidson Chip Seal Yr 1- Part 1

Legend

— DavidsonChipSealYr1



Davidson Chip Seal Yr 1- Part 2



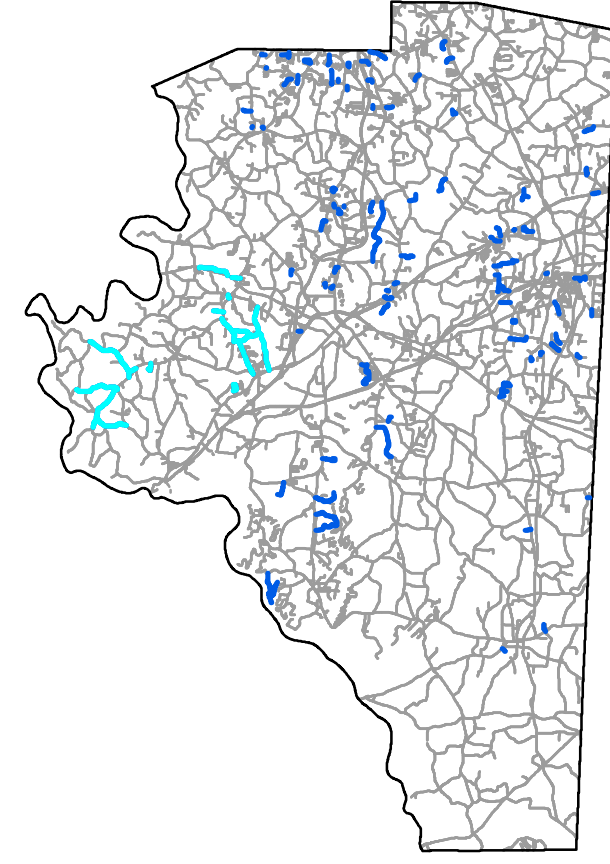
Legend

— DavidsonChipSealYr1

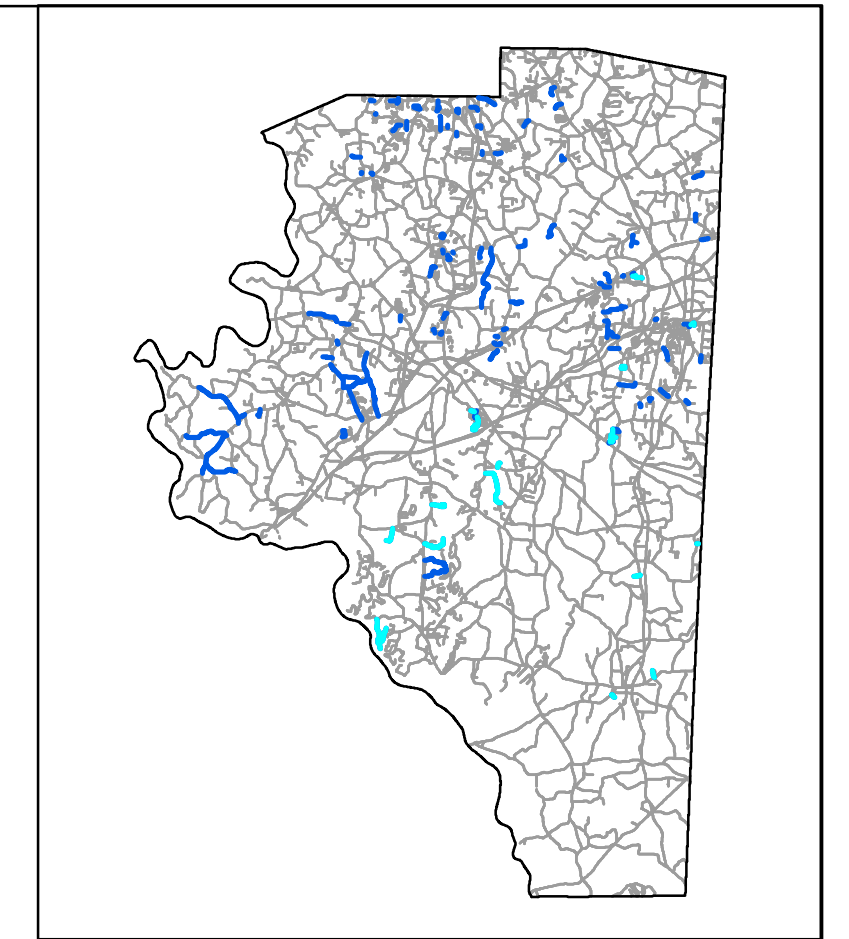
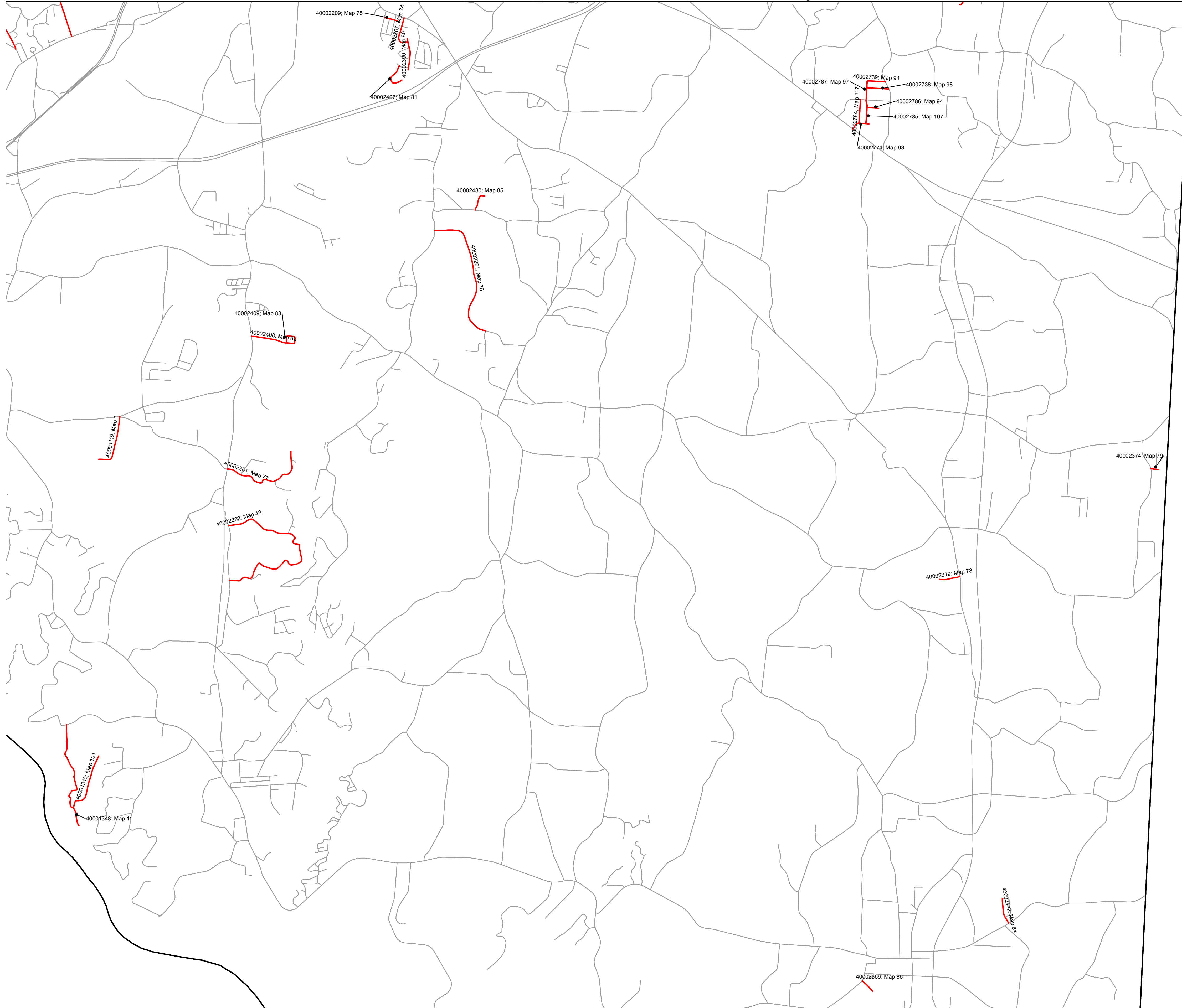
Davidson Chip Seal Yr 1- Part 3

Legend

— DavidsonChipSealYr1



Davidson Chip Seal Yr 1- Part 4



Legend

— DavidsonChipSealYr1